



LS Bike & Hike

FIUGGI (Italy) - May 23rd - 30th 2026





- **Ambasciatori Place Hotel (Fiuggi-Italy) - 4 stars - Super Half Board - 5 nights**

Super Half Board

includes Intercontinental breakfast from 7.30am to 10.00am sweet and savoury buffet, fresh and homemade products. Light Lunch buffet after ride, available from 1.00 pm to 4.00 pm with pasta/soup, vegetables, typical pizza bread from Fiuggi with selection of local cured meats, fruits, water, soft drink. - Dinner four courses, (beverage not included.).

- **Virgilio Grand Hotel (Sperlonga-Italy) - 4 stars - Bed & Breakfast - 2 nights**

Bed & Breakfast

Intercontinental breakfast from 7.30am to 10.00am sweet and savoury buffet.

Included:

- 5 bike rides or 5 Hiking Tours
- 2 Bike Guides - 2 different level of rides.
- 1 Private Hiking Guide
- 1 Wine Tasting.
- Technical Induments Laundry Service Included.
- Minivan Transfers to/from seacoast for all luggages.
- SPA Center (Jacuzzi, Finnish Sauna, Steam Bath, comfort and relaxation area)

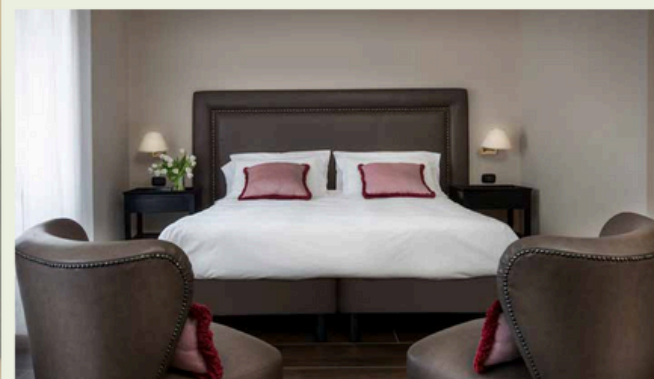
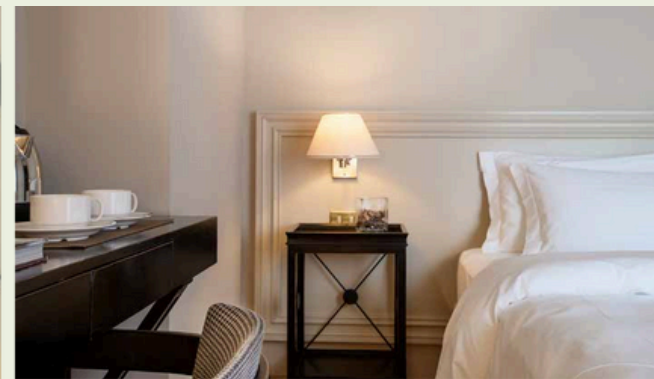
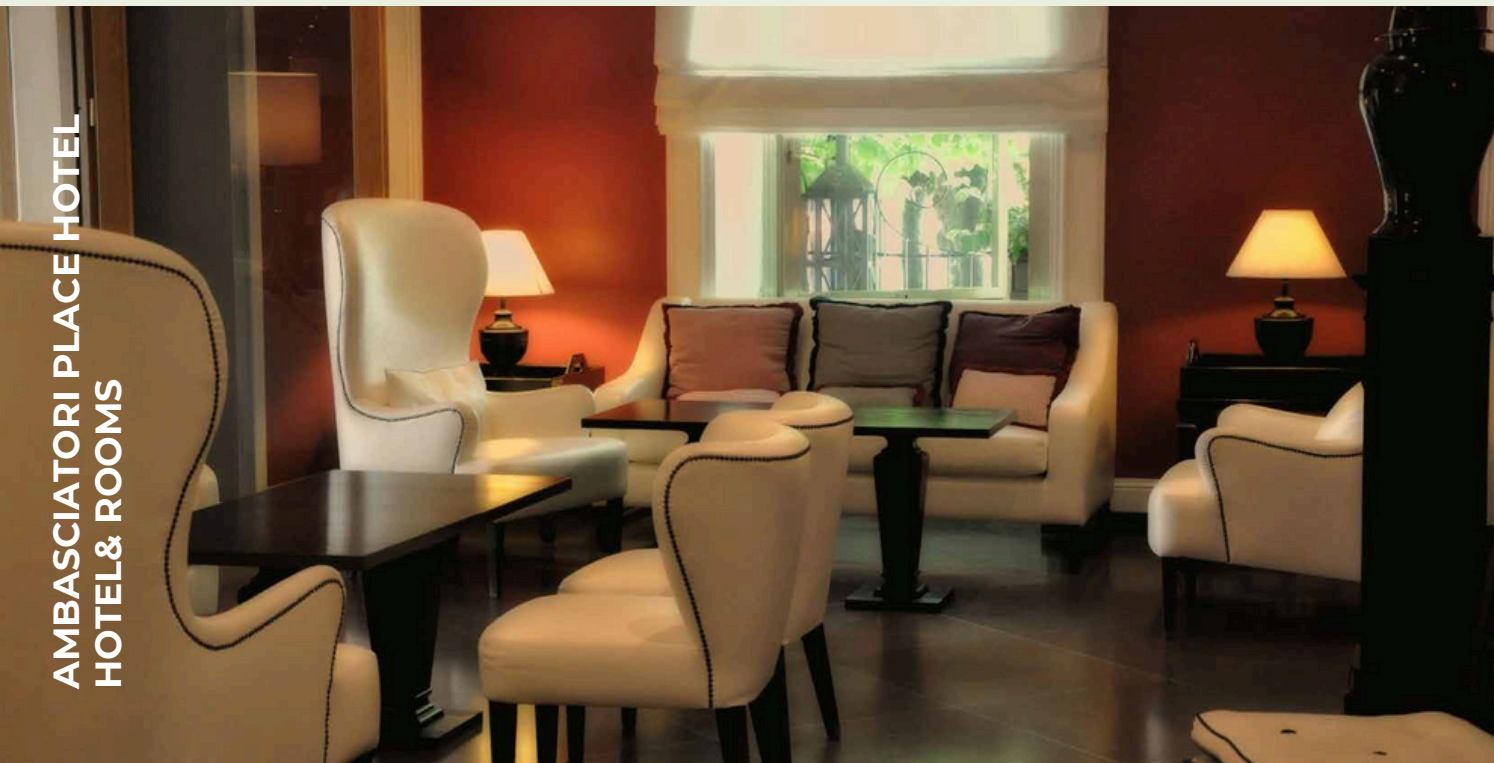




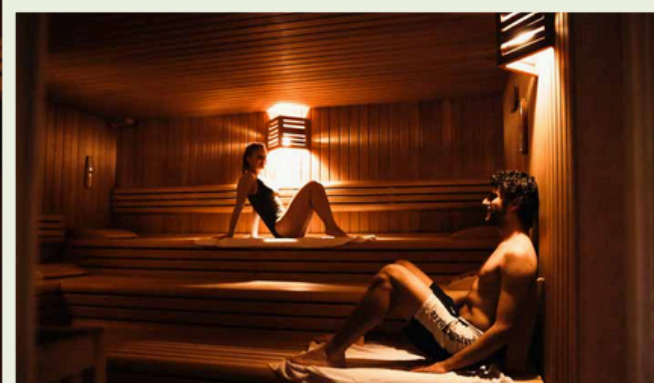
Not included:

- City Taxes (Average € 4,50 per person per day)
- All drinks and extras
- Dinners in Sperlonga
- Riviera di Ulisse Boat Tour
- Transfers from the main airports (Rome FCO - Rome CPO)
Quotation available on request.

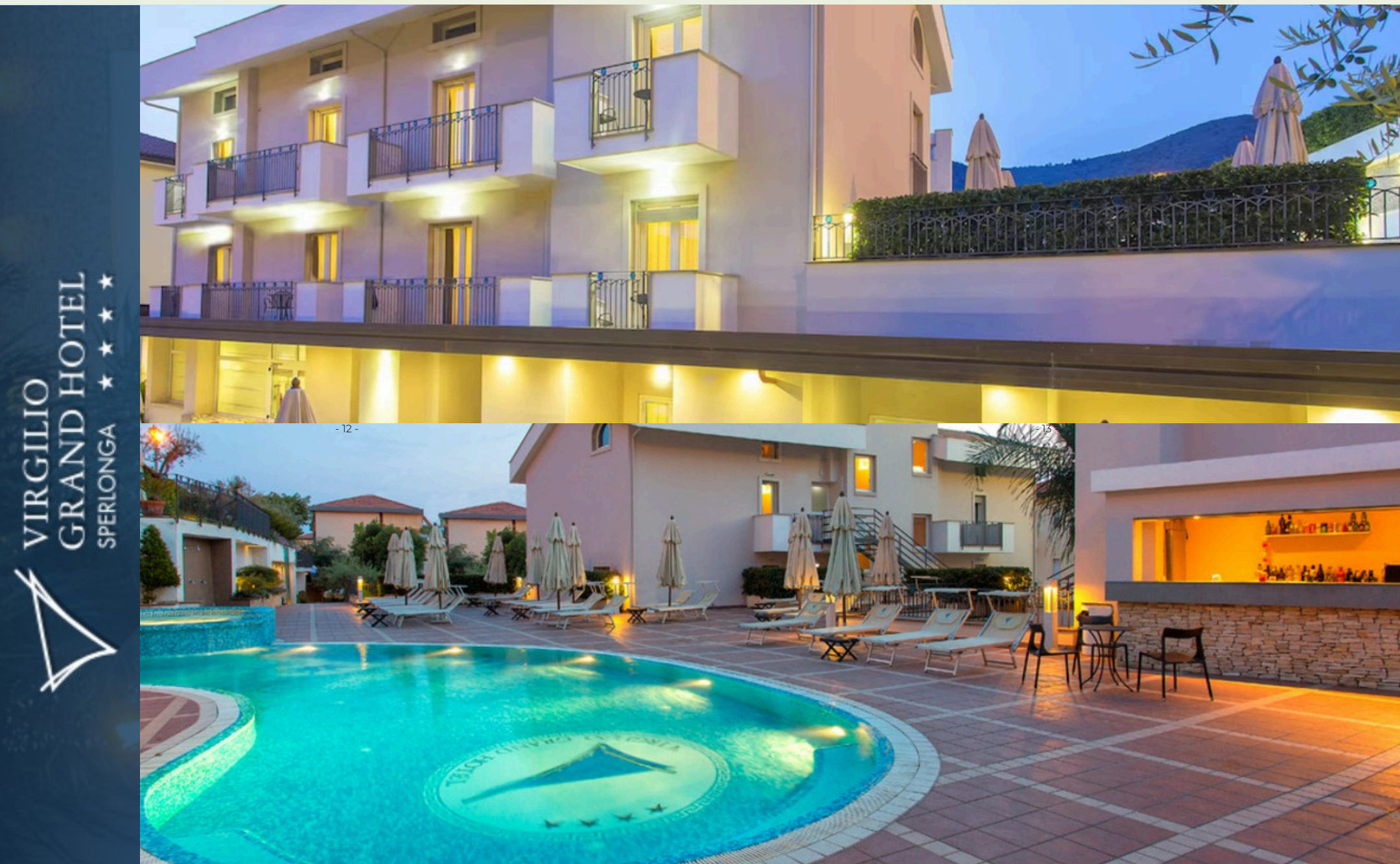
AMBASCIATORI PLACE HOTEL
HOTEL & ROOMS



AMBASCIATORI PLACE HOTEL
TANGERINE SPA



SPERLONGA SEA COAST



VIRGILIO
GRAND HOTEL
SPERLONGA ★ ★ ★ ★ ★



- 12 -

- 13 -

Packages Prices:

- 2750,00 EUR per person (Bike Rental Included)

Standard Room with SPA Access:

Queen Size bed, flat screen tv (32"), tea kettle with a selection of teas, writing desk and chairs.

- 3050,00 EUR per person (Bike Rental Included)

Superior Room with SPA Access:

Double Room. King Size bed, flat screen tv (32"), tea kettle with a selection of teas, writing desk, chairs, table with easy chair.

- 2450,00 EUR Single Room* (Bike Rental Included)

*only 3 rooms available.

- 2050,00 EUR per person (No Rider - Hiking Tours Included)

-
- 2450,00 EUR per person (Bike Rental not Included)

Standard Room with SPA Access:

Queen Size bed, flat screen tv (32"), tea kettle with a selection of teas, writing desk and chairs.

- 2850,00 EUR per person (Bike Rental not Included)

Superior Room with SPA Access:

Double Room. King Size bed, flat screen tv (32"), tea kettle with a selection of teas, writing desk, chairs, table with easy chair.

- 2050,00 EUR Single Room* (Bike Rental not Included)

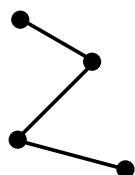
*only 3 rooms available.



Bike Ride Technical Informations:

RIDE 1 - 2 Difficult Levels

FUMONE CASTLE Bike Tour



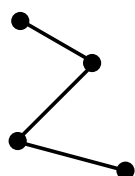
Distance: 39 miles



Elevation: +3940 feet

HIKING Technical Informations:

CANTERNO LAKE



Distance: 5 miles



Elevation: +1312 feet

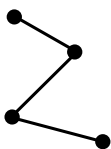
Bike Ride Technical Informations:

RIDE 2 - 2 Difficult Levels



EPIC RIDE

MONASTRY ROAD Bike Tour



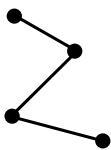
Distance: 42 miles



Elevation: +4590 feet

HIKING Technical Informations:

SAN BENEDETTO MONASTRY
AND WATERFALL



Distance: 5 miles

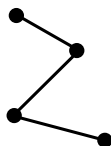


Elevation: +2132 feet

Bike Ride Technical Informations:

RIDE 3 - 2 Difficult Levels

WINE TASTING Bike Tour



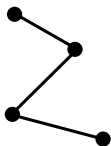
Distance: 35 miles



Elevation: +2950 feet

HIKING Technical Informations:

SCALAMBRA,SERRONE VILLAGE
&
WINE TASTING



Distance: 6 miles



Elevation: +2460 feet

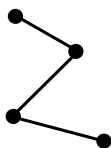
Bike Ride Technical Informations:

RIDE 4 - 2 Difficult Levels



EPIC RIDE

FROM MOUNTAINS TO SEA



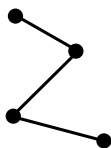
Distance: 59 miles



Elevation: +3116 feet

HIKING Technical Informations:

VISIT OF FOSSANOVA ABBEY AND JUPITER TEMPLE



Distance: 3,8 miles



Elevation: +820 feet

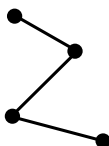
Bike Ride Technical Informations:

RIDE 5 - 2 Difficult Levels



EPIC RIDE

FROM SEA TO MOUNTAINS



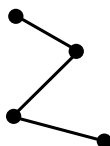
Distance: 99 miles



Elevation: +3740 feet

Bike Ride Technical Informations:

VISIT OF PASTENA CAVES



Distance: 2,50 miles